

CSPower OPzS series is flooded Lead Acid battery that adopts Tubular Plate technology to offer high reliability and performance. The Battery is designed and manufactured according to standards and with DIN40736-2/IEC60896-11 positive spine and patent formula of die-casting active material. OPzS series exceeds standard values with more DIN40736-2/IEC60896-11 than 20 years floating design even more suitable for life at 25°C and is cyclic use(PV/solar, traction etc) under extreme operating conditions.

2V  
600Ah

Flooded  
Technology

Tubular  
Plate



### Applications

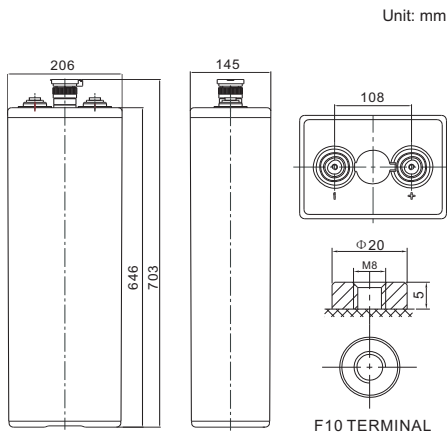
- Solar & Wind Power system
- Nuclear power station
- Telecom backup power supply
- energy saving requirements  
Emergency Power System

### General Features

- ✓ It can discharge at -40°C~70°C, Charge at 0-50°C
- ✓ Long life expectancy of 20+ years in floating condition
- ✓ Adopts quality silicon nano gel electrolyte
- ✓ Excellent deep discharge recovery capability
- ✓ Deep cycle performance: up to 3300

### Dimensions & Weight

### Technical Specifications



Length	145±1mm (5.71 inches)
Width	206±1mm (8.11 inches)
Height	646±1mm (25.4 inches)
Total Height	703±1mm (27.7 inches)
Torque Value	10~12 N*m

<b>Cells Per Unit</b>	1
<b>Voltage Per Unit</b>	2
<b>Nominal Capacity</b>	600Ah@10hr-rate to 1.85V per cell @25°C
<b>Weight</b>	Without Electrolyte 34.4kg/With Electrolyte 46.4kg
<b>Internal Resistance</b>	Approx. 0.45 mΩ
<b>Terminal</b>	F10(M8)
<b>Max. Discharge Current</b>	2500A (5 sec)
<b>Design Life</b>	20 years (floating charge)
<b>Maximum Charging Current</b>	90.0 A
<b>Reference Capacity</b>	C24 718.2AH C48 808.0AH C72 848.4AH C100 867.8AH C120 885.2AH C240 900.0AH
<b>Float Charging Voltage</b>	2.23 V~2.25 V @ 25°C Temperature Compensation: -3mV/°C/Cell
<b>Cycle Use Voltage</b>	2.40 V~2.45 V @ 25°C Temperature Compensation: -4mV/°C/Cell
<b>Operating Temperature Range</b>	Discharge: -15°C~50°C Charge: 0°C~40°C Storage: -15°C~50°C
<b>Normal Operating Temperature Range</b>	25°C ±5°C
<b>Self Discharge</b>	Valve Regulated Lead Acid (VRLA) batteries can be stored for up to 6 months at 25°C and then recharging is recommended. Monthly Self-discharge ratio is less than 3.5% at 25°C. Please charged batteries before using.
<b>Container Material</b>	A.B.S. UL94-HB, UL94-V0 Optional.

### Battery Discharge Table

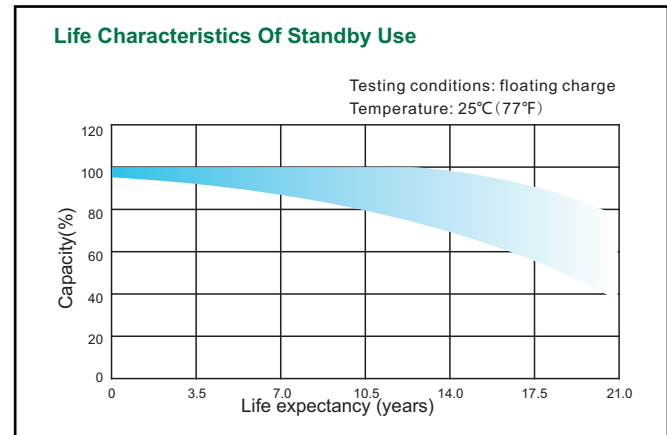
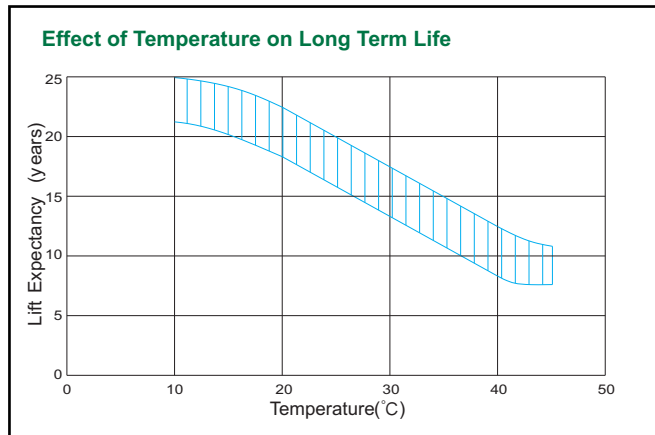
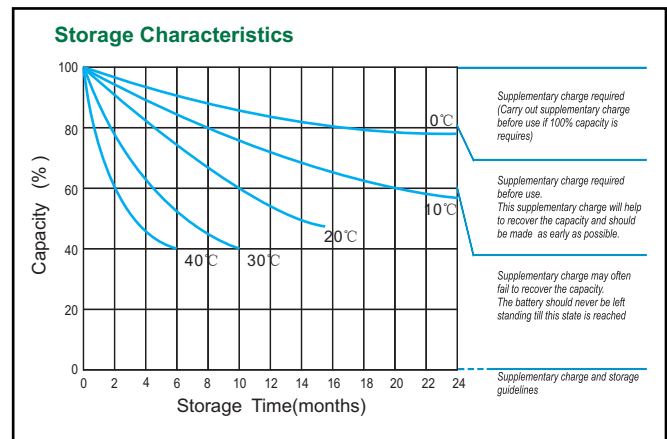
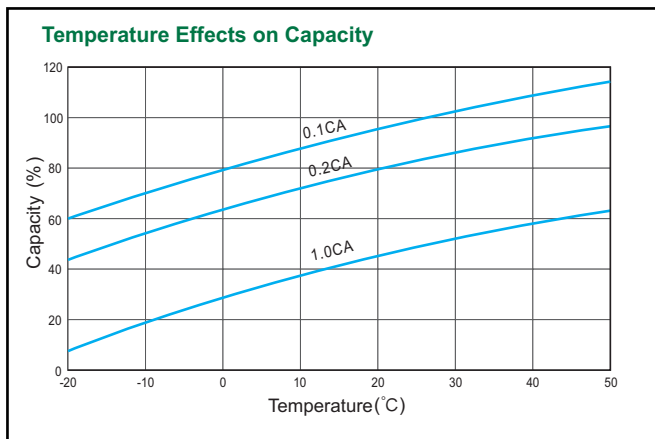
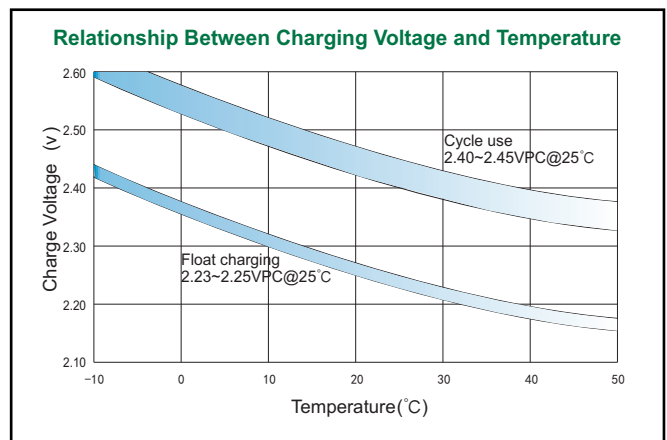
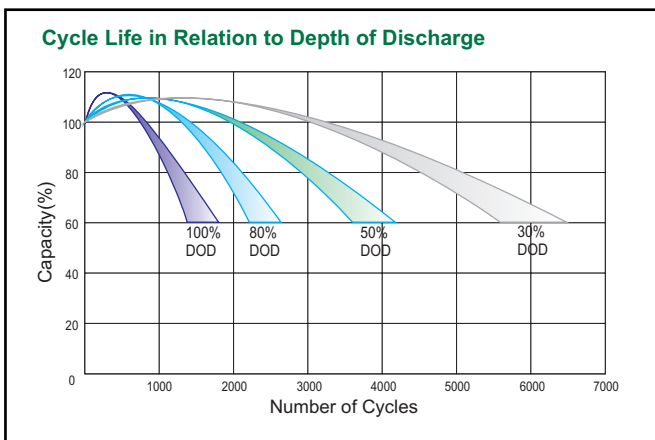
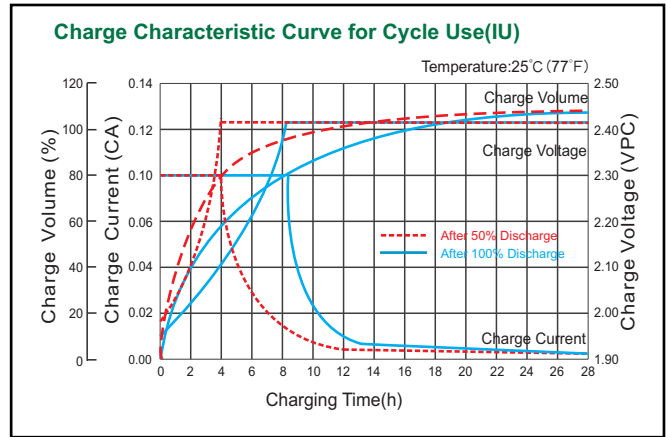
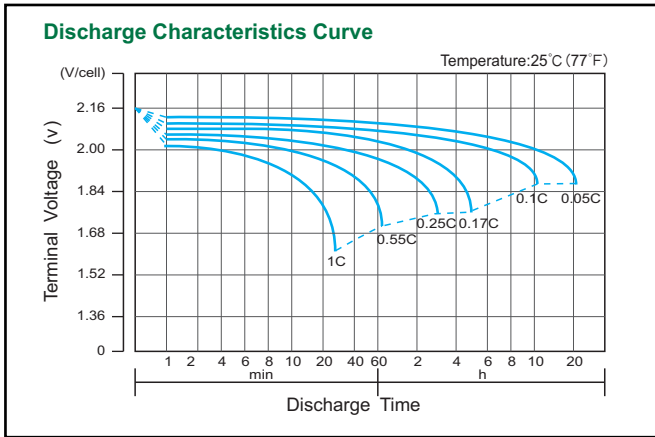
#### Discharge Constant Current per Cell (Amperes at 25° C)

F.V/ Time	30min	1h	2h	3h	4h	5h	6h	8h	10h	20h
1.90V	319.3	253.1	178.4	136.0	107.7	95.8	83.79	65.39	56.07	32.25
1.87V	356.9	279.0	191.4	144.8	113.7	101.3	88.83	68.44	58.59	33.69
1.83V	408.8	311.5	207.6	154.9	119.7	105.8	91.98	71.50	61.11	35.14
1.80V	454.2	337.4	215.4	159.4	122.1	108.3	94.50	73.33	63.00	36.22
1.75V	506.1	361.4	225.2	164.5	124.1	110.2	96.39	74.55	64.26	36.94
1.70V	558.1	373.1	231.7	168.4	126.3	112.0	97.65	75.17	64.89	37.32
1.65V	575.6	396.5	239.4	172.6	128.1	113.5	98.91	75.78	65.52	37.68
1.60V	600.2	410.1	248.5	178.4	131.7	115.9	100.2	76.39	66.15	38.04

#### Discharge Constant Power per Cell (Watts at 25° C)

F.V/ Time	30min	1h	2h	3h	4h	5h	6h	8h	10h	20h
1.90V	611.1	485.8	345.0	264.5	210.8	188.2	165.7	130.8	114.3	65.71
1.87V	672.4	527.6	365.9	279.7	222.2	198.7	175.1	136.3	119.2	68.52
1.83V	753.2	575.2	389.3	295.5	233.0	206.9	180.8	141.2	123.4	70.97
1.80V	823.0	613.7	402.4	303.4	237.4	211.4	185.2	144.2	126.5	72.74
1.75V	892.8	641.1	415.4	310.5	240.6	214.5	188.4	146.1	128.3	73.78
1.70V	957.3	647.6	425.9	317.0	244.4	217.4	190.3	147.3	129.6	74.49
1.65V	973.7	676.3	437.6	323.6	247.6	219.8	192.2	148.5	130.2	74.85
1.60V	985.4	697.1	448.0	331.5	253.9	223.7	193.4	149.1	130.8	75.19

### Performance Characteristics



**Note:** The above data are average values, and can be obtained within 3 charge/discharge cycles. These are not minimum values. Cell and battery designs/specifications are subject to modification without notice. Contact **CSPower** for the latest information.

**CSPower Battery Tech Co., Ltd.**

Add: Floor 3, Evolution Space, NO.61, Liuxian 2nd Road, Baoan, Shenzhen, China

Tel: +86-755-29123661 Email: sales@csppower.com